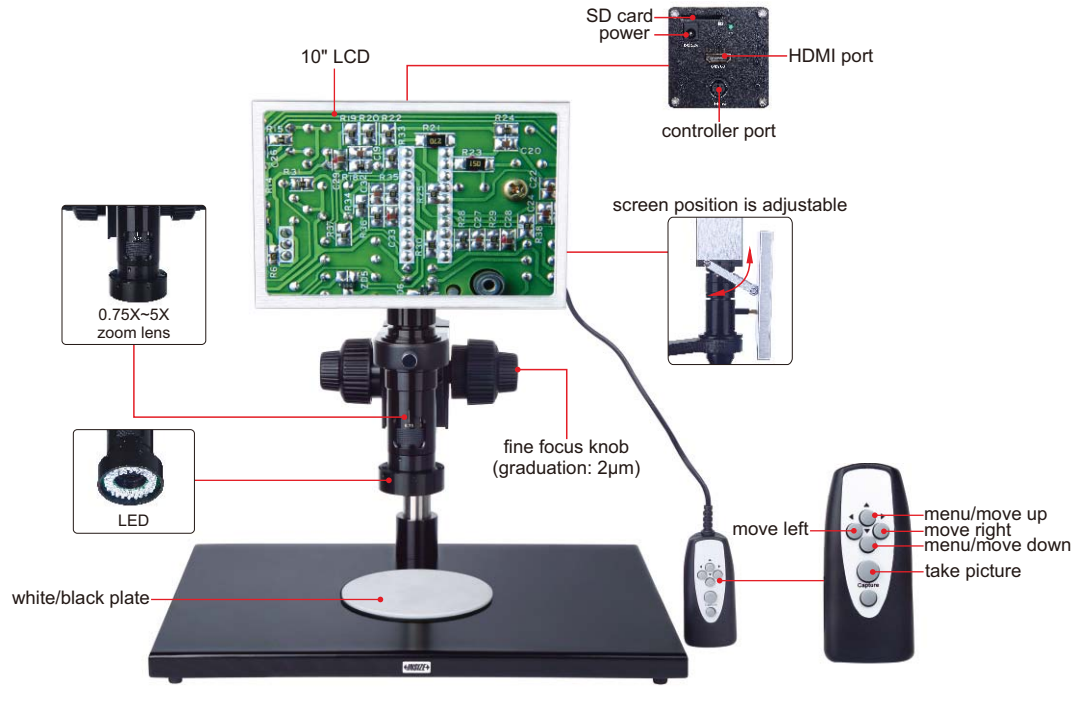


DIGITAL MICROSCOPE (WITH DISPLAY)

CODE ISM-DL200



TAKE PICTURES



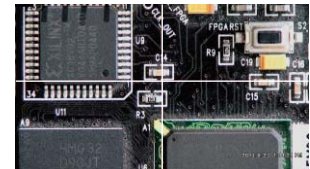
0.5X camera adapter (included)



1X auxiliary objective (included)



4G memory card and holder (included)



crosshair (white/black)

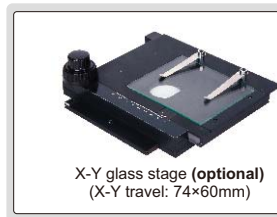
- Take pictures, saved to memory card
- Automatic white balance and exposure
- Brightness, contrast ratio, gain are adjustable



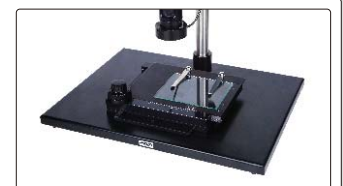
1X camera adapter (optional)



2X auxiliary objective (optional)



X-Y glass stage (optional) (X-Y travel: 74x60mm)



SPECIFICATION

Magnification	18X~112X
Sensor	1/3" CMOS
Pixel	1.3M
Resolution	1280x800
Frame rate	60fps
Output	HDMI
Power supply	power adapter
Dimension (LxWxH)	400x300x430mm
Weight	6kg

OPTIONAL ACCESSORY

1X camera adapter	ISM-DL-CA1X
2X auxiliary objective	ISM-DL-OB2X
X-Y glass stage (travel: 74x60mm)	ISM-DL-STAGE
X-Y metal stage	ISM-DL-STAGE1
LED auxiliary illumination	ISM-DL-LED
Coaxial light illumination	ISM-DL-COAXIAL
Auxiliary objective lens	

STANDARD DELIVERY

Main unit	1pc
0.5X camera adapter	1pc
1X auxiliary objective	1pc
4G memory card and holder	1pc
White/black plate	1pc
HDMI cable	1pc
Power adapter	1pc

MAGNIFICATION, FOCUS DISTANCE AND VIEW FIELD

Auxiliary Objective	Specification	Camera adapter	
		0.5X (included)	1X (optional)
1X (included)	Magnification	18~112X	36~224X
	Focus distance	70±2mm	70±2mm
	View filed	12.8x8.4~2x1.3mm	6.3x4.3~1x0.65mm
2X (optional)	Magnification	36~224X	72~448X
	Focus distance	29±2mm	29±2mm
	View filed	6.3x4.3~1x0.65mm	3.3x2~0.51x0.38mm