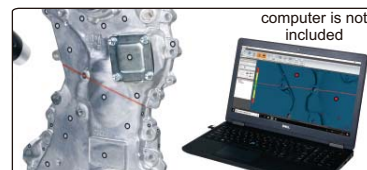


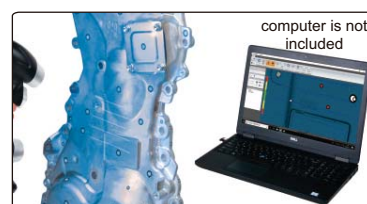
HANDHELD DUAL COLOR LASER SCANNER CODE ISD-L715



7×7 red laser lines rapid scan
(for large workpieces)



single red laser line scan
(for internal angles, holes
and so on, the depth of hole<2x diameter)



five blue laser lines fine scan
(for small areas)

- Red and blue laser scanning mode fast switch
- The environment has very little effect on the scanning accuracy and can work under sunlight

APPLICATION

Function	for measurement、3D printing and reverse engineering
Workpiece size	>1cm
Accuracy	0.02mm+0.06L (red) (L is the scan distance, unit: m) 0.01mm+0.06L (blue) (L is the scan distance, unit: m)
Scan time	workpiece size 10cm 2min (use 1mm resolution red laser) workpiece size 50cm 5min (use 1mm resolution red laser) workpiece size 100cm 10min (use 1mm resolution red laser) workpiece size 200cm 15min (use 1mm resolution red laser) workpiece size 500cm 25min (use 1mm resolution red laser)
Workpiece surface requirement	developer is needed for transparent, light penetration and high reflective surfaces
Workpiece structure requirement	be sure that the laser line can get into internal angles, holes and cavities, etc., also the cameras can receive the reflect of laser
Mark requirement	the camera view field has no less than four marks, and the distance between marks should be larger than 30mm and less than 100mm

SPECIFICATION

Scan mode	Red laser	Blue laser
Laser form	7×7 and single red laser lines	five blue laser lines
Scan rate	480,000 measurements/s	320,000 measurements/s
Laser safety grade	CLASS II (Eye-safe)	
Min resolution	0.1mm	0.03mm
Depth of field	250mm	100mm
Focus distance	200mm~450mm	100mm~200mm
Output format	.stl .ply .xyz .dae .fbx .ma .obj .asc	
Working temperature	-10°C~40°C	

STANDARD DELIVERY

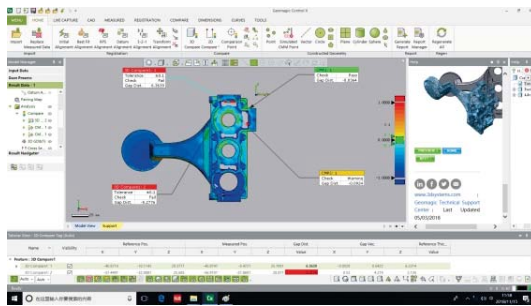
Main unit	1 pc
Software	1 pc
R1.43mm mark	1000 pcs
R3mm mark	4000 pcs
Calibration plate	1 pc

OPTIONAL ACCESSORY

3D measuring software	ISD-L715SFT
Computer	ISD-L-CO732

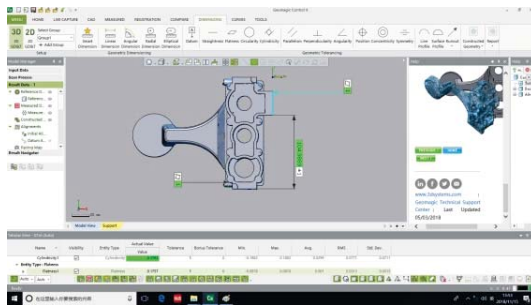
3D measuring software (optional)

- **Operation system:** Windows 7/8/10
- **Language:** English, Chinese
- **3D compare measurement between scanned document and drawing:**

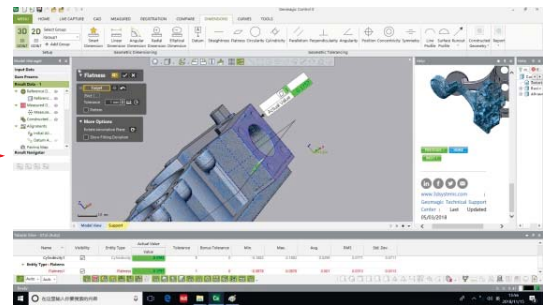


automatic comparison of scanned documents and drawings, use different colors to display the deviation degree, automatically display the out-of-tolerance position and the value

▪ **Geometric tolerance measurement:**

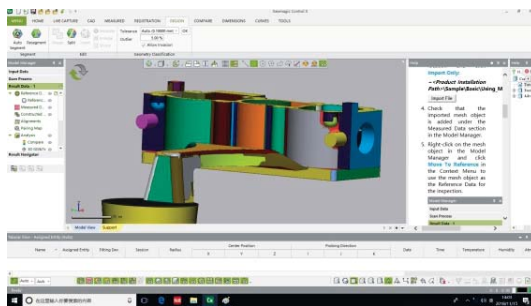


local zoom →

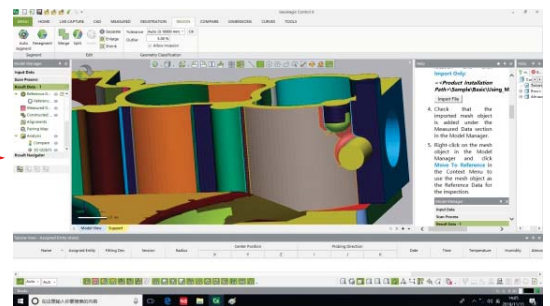


automatic comparison of scanned documents and drawings, click the mouse to select the position, can automatically complete such as planeness, cylindrical, contour, and other dimensional tolerance measurement

▪ **Reverse engineering:**



manual correction →



The scanned document can generate the drawing automatically (manual correction is required)